



smartclip

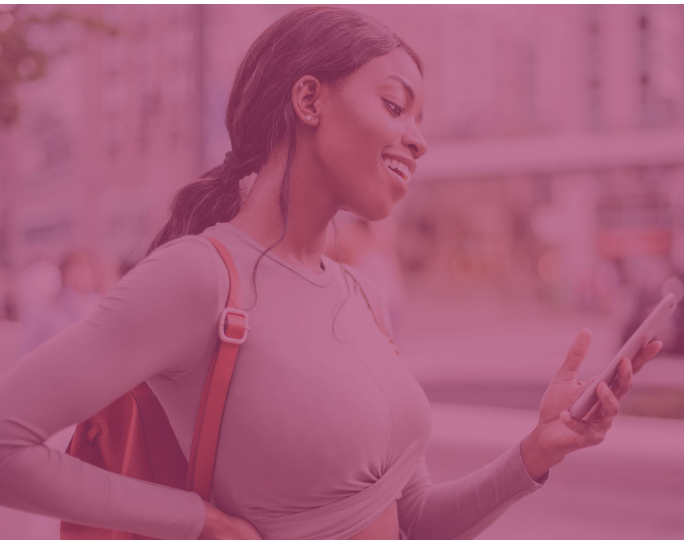
Ad Guide

Out-Stream BNLX

2021

Contents

General Information	3
Out-Stream: Standard Video Formats	4
In-Text Landscape Ad	4
In-Text Interactive Ad	5



General Information



Technical Specifications

smartclip's best practices for video advertising creatives:

- Aspect ratio: 16:9 (standard widescreen)
- Video length: 15-25 seconds (recommended)
- The following setups are not allowed (settings will get applied by smartclip):
 - o Automatically expanding ads
 - o Inserted "close button"
 - o Preset cappings (geo, FC, device, etc.) by campaign/agency

For In-Text Branded Activation Ads, In-Text Interactive Ads, In-Text Choose Ads and all Rich Media Video Effect formats, in addition to video and imagery, please provide the CI Guide including colour code, fonts, logos as well as the desired wording (e.g. slogans) for the campaign.

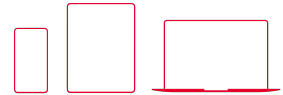
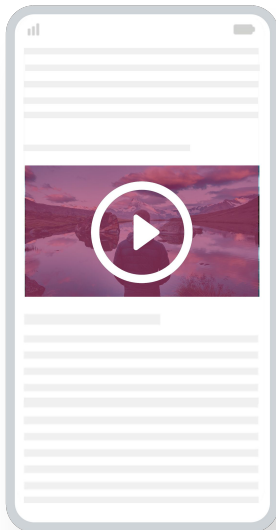
Subtitles/closed captioning: VAST 4.1 enables subtitles/closed captioning by standardising the delivery of closed captioning files. Please make sure to include closed caption file.

For IO, please provide all creative material or redirects at least 5 days before campaign start. Delayed/incorrect delivery can lead to a delayed starting date of the agreed campaign and a punctual start is no longer guaranteed. Changing ads during the campaign period may only be carried out with tested advertising assets and in accordance with smartclip.

Subject to prior consultation and agreements, other requirements may apply for individual forms of advertising/billing.

Out-Stream: Standard Video Formats

In-Text Landscape Ad



Placed in a brand-safe, editorial environment, the In-Text Landscape Ads are embedded directly within the body of a publisher's text article. When scrolling up or down the publisher's article page, the video ad automatically starts once 50% of the player becomes visible and stops when less than 50% of the ad is visible. Viewable by design.

Landscape

Desktop
 Tablet
 Mobile



Technical Specifications

Video File

Please provide a click URL and trackers (if applicable).

File Type

MOV, MP4, MPG

Video Resolution

1920x1080 (recommended),
1280x720 (minimum)

Aspect Ratio

16:9 (landscape)

File Size

max. 200 MB

FPS

24-30

Audio

min. 128 Kbps, 44 kHz, Stereo, ACC
or MP3 (recommended)

Video Bitrate

min. 2500 Kbps

Tag / Redirect Delivery

Please supply as a separate text file attachment.

Approved Tags

VAST 2.0, VAST 3.0, VAST 4.0, VPAID 2.0

Protocols

TLS (SSL)-enabled

VAST

linear VAST Tags are accepted
(IAB standards)

VPAID

only supported as of Javascript

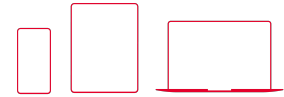
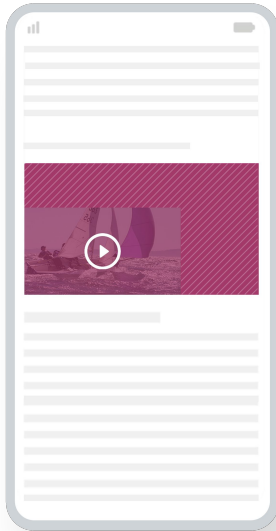
Video Bitrate

min. 2000 Kbps (CTV); min. 800 Kbps (mobile)

Resolution

Creative to contain min. a media file
each of 640x360 and 960x540

In-Text Interactive Ad



The In-Text Interactive Ad enables advertisers to customise video ads with various (animated) graphic elements with the option of multiple click-throughs. When scrolling up or down the publisher's article page, the video ad automatically starts once 50% of the player becomes visible and stops when less than 50% of the ad is visible. The player works in both classic desktop as well as mobile environments. Viewable by design.

Landscape

- Desktop
- Tablet
- Mobile

Square

- Tablet
- Mobile



Technical Specifications

Video File

Please provide a click URL and trackers (if applicable).

File Type

MOV, MP4, MPG

Video Resolution

1920x1080 (recommended),
1280x720 (minimum)

Aspect Ratio

16:9 (landscape)

File Size

max. 200 MB

FPS

24-30

Audio

min. 128 Kbps, 44 kHz, Stereo, ACC or MP3 (recommended)

Video Bitrate

min. 2500 Kbps

Image Assets

1920x1080 (recommended),
1280x720 (minimum); JPG, PNG, PSD

Tag / Redirect Delivery

Please supply as a separate text file attachment.

Approved Tags

VAST 2.0, VAST 3.0, VAST 4.0, VPAID 2.0

Protocols

TLS (SSL)-enabled

VAST

linear VAST Tags are accepted (IAB standards)

VPAID

only supported as of Javascript

Video Bitrate

min. 2000 Kbps (CTV); min. 800 Kbps (mobile)

Resolution

Creative to contain min. a media file each of 640x360 and 960x540



smartclip

For updates, follow us on social media:

 [@smartclipEurope](#) |  [@smartclip](#)